



Elementa

RIGID LUXURY VINYL TILES



Content

T A B L E

#01

Intro

p. 4

#02

Why choose Elementa?

p. 6

#03

**How is this compact
rigid flooring made?**

p. 8

#04

Installation

p. 10

#05

The perfect finish

p. 12

#06

Looks

p. 14

#07

**Floors better for today,
in every way**

p. 26

#08

Technical specifications

p. 27



Intro

#01

E L E M E N T A

Rigid Luxury Vinyl Tiles (LVT) are perfect for homes wanting a beautiful, natural looking floor that's easy to install, durable and simple to look after. Thanks to a dense and solid core, they can even be installed over uneven subfloors and with the speed of a Uniclic® joint, they're a great choice for renovation. With all the advantages that make vinyl floors so easy to enjoy, Rigid LVT is perfect for today's busy family homes.

With Elementa, our Belgian design team has made sure that you can enjoy the durability and maintenance benefits of Rigid LVT in a wood-effect floor that's ready to match your style. With both calm and more rustic oak looks across a range of shades, Elementa is the perfect entry into Rigid LVT.

“

Beautiful designs in flooring that's strong and surprisingly easy to install.

”



Why choose Elementa?

#02

BENEFITS OF ELEMENTA

Quick and straightforward to install, durable in use and beautifully simple to maintain, Elementa is a wood-effect floor that's easy to enjoy.

The worry-free benefits of vinyl

Elementa has all the practical advantages you could want from a floor. Water, stain and scratch resistant, easy to clean and 100% recyclable, it's truly worry-free flooring.



Renovation friendly

With a rigid and dense core that stops unevenness and the proven Uniclic® joint, Elementa's compact four-layer construction is ideal for renovation.



The beauty of wood

Designed in-house in Belgium, Elementa welcomes the natural look of wood into your home. With a textured surface and matt top layer, Elementa is close to the real thing.



Quality you can trust

Tested to the world's most stringent standards and endorsed by IVC Group, you can trust Elementa. With a strong core and hardwearing 0.30 mm wear finish, this is a floor that's made to last.



#03

How is this compact rigid flooring made?

PRODUCT BUILD-UP OF ELEMENTA

Elementa uses the latest innovation in compact flooring construction to provide a floor that is the perfect entry into Rigid LVT. At the heart of Elementa is the rigid core that ensures excellent stability and easy installation. Combined with a high-quality protective lacquer, it's a construction that's up for the task.

Let's look at Elementa's multi-layer construction in a little more detail:



UNICLIC®
PATENTED TECHNOLOGY

GLOSSARY



Design



Strength



Scratch & stain



Moisture protection



Dimensional stability

1 Protective PU lacquer

The protection of a PU lacquer that doesn't wash-off means that Elementa is scratch and stain-resistant. Standing up to drops, spills and dirt, this layer enhances daily usability.

2 Reliable wear layer

The 0.30 mm wear layer found on all Elementa floors provides resistance to wear for a surface that's made to last. In fact, Elementa achieves the highest wear class possible for residential use. A textured finish helps Elementa to feel as good as it looks.

3 High definition design

Elementa has a natural wood look thanks to this high-definition design layer. The design captures the realistic grain of oak and the beautiful colour nuances of real wood.

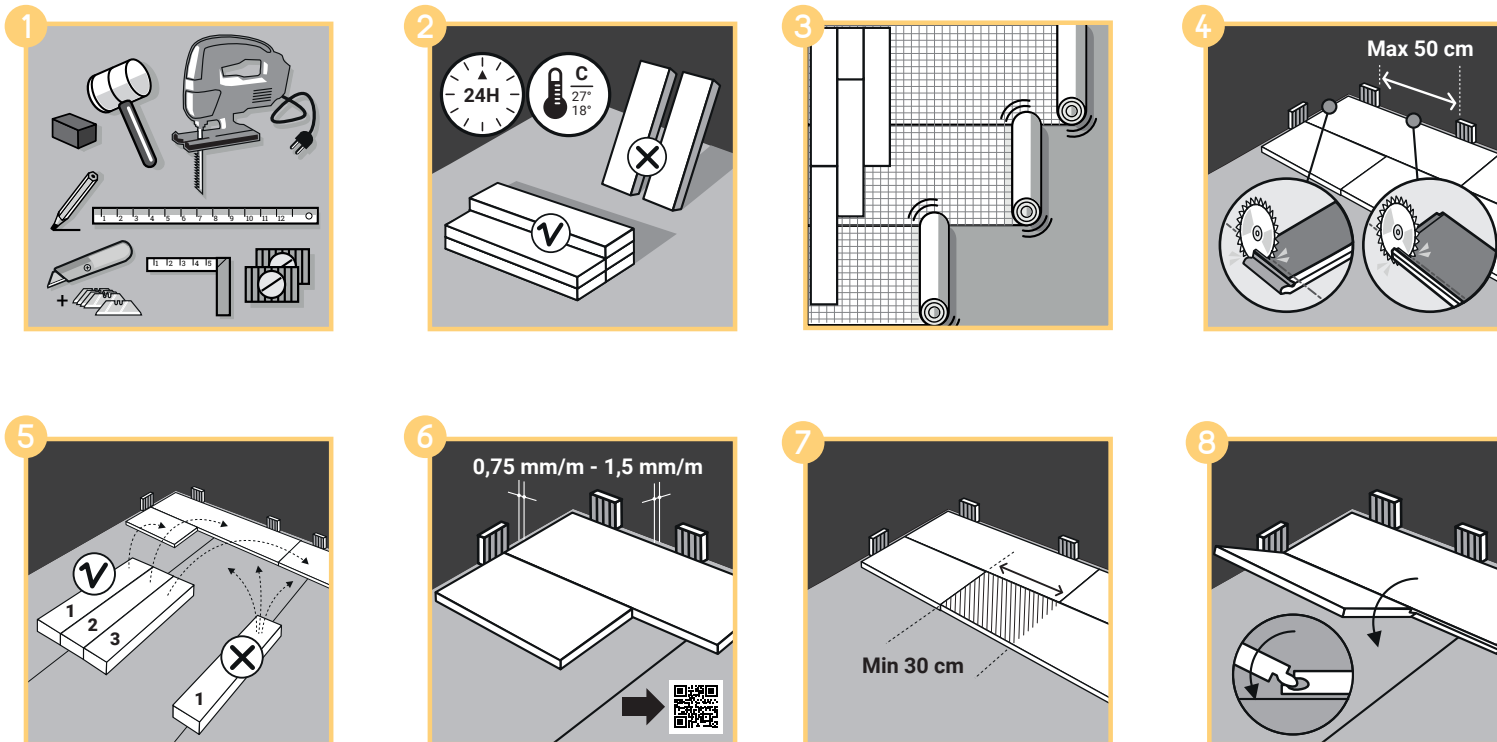
4 Rigid core

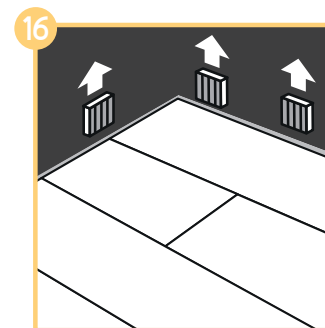
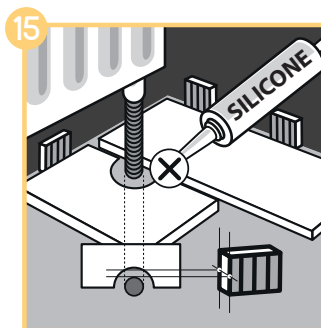
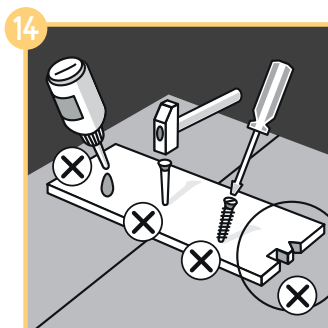
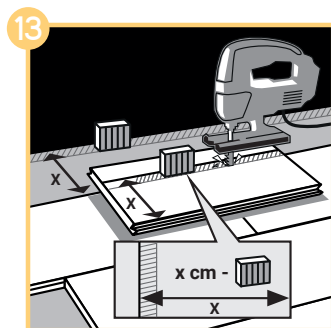
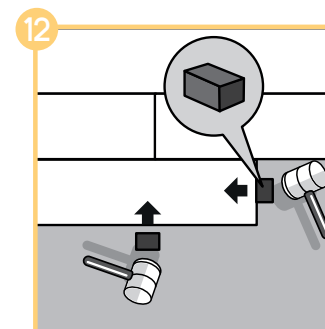
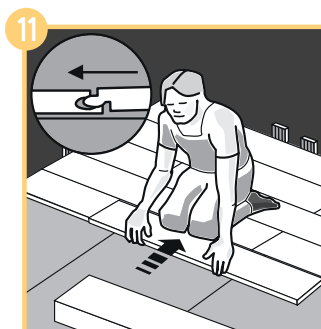
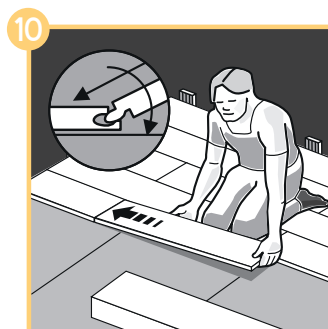
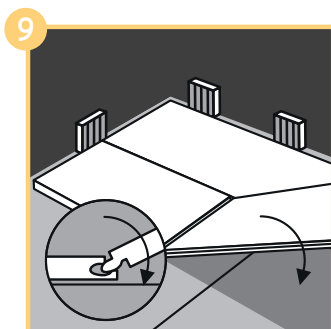
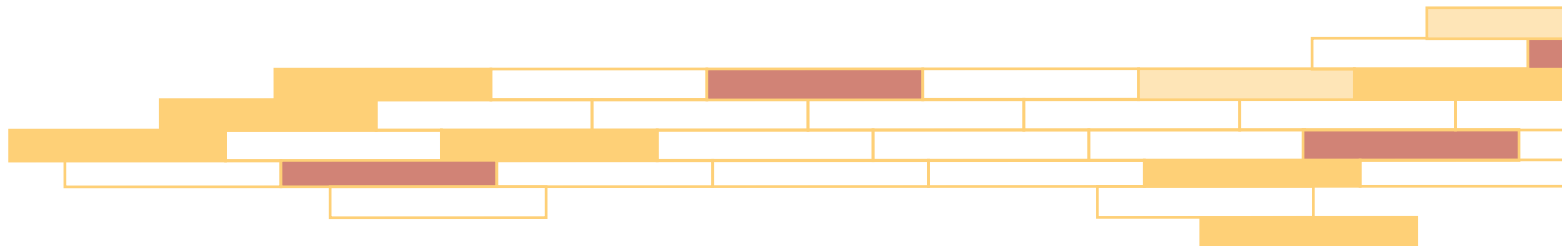
The rigid core of Elementa prevents telegraphing – where the floor settles to imperfections beneath – so that Elementa can be installed over a range of less than perfect subfloors. The core is also the reason for the class-leading dimensional stability. Keeping movement to the bare minimum, it makes sure Elementa stays locked to the ground, regardless of temperature. The core also lets you enjoy the quick and easy Uniclic® joint with its renowned locking strength and reliability.

Installation

WORRY-FREE RIGID CLICK SYSTEM

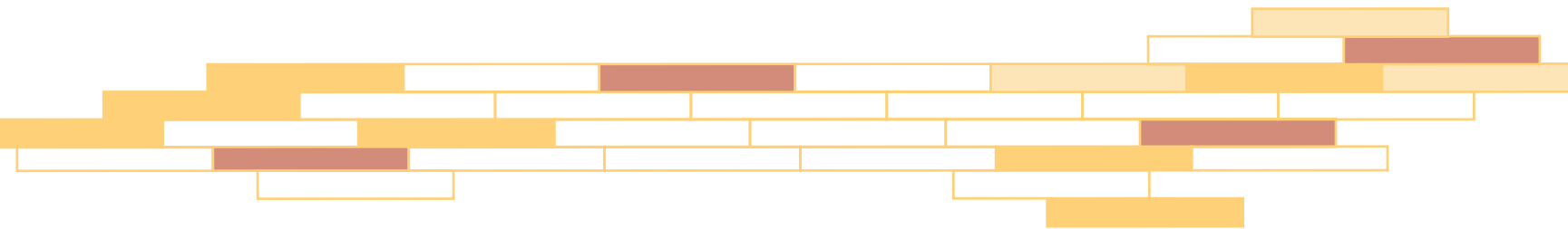
Elementa is remarkably easy to install. Its rigid core and reliable locking system assure a smooth installation for a lasting result.





For detailed **Elementa** installation instructions, please check
www.installandclean.com/en/lvtrigiduniclic

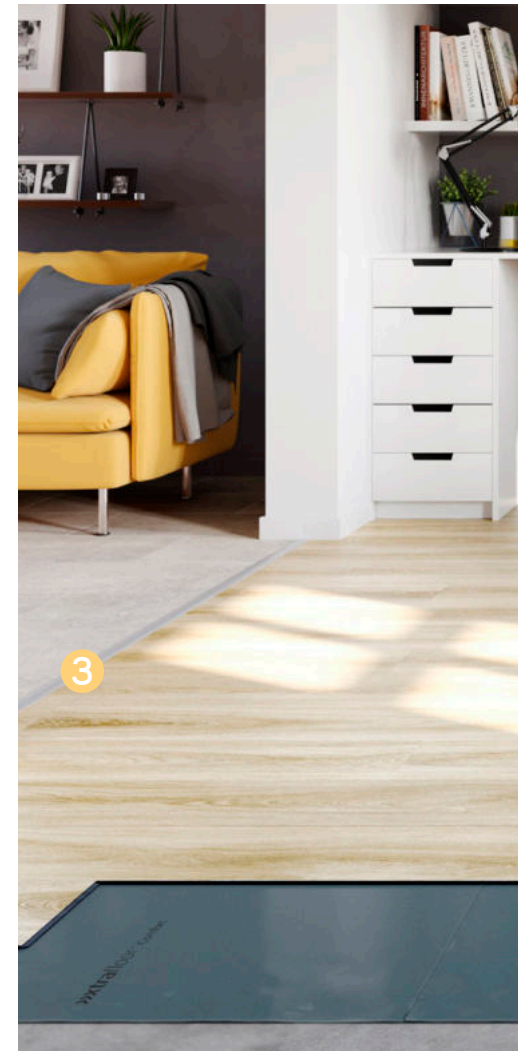
#05



For the perfect finish, you need the perfect range of accessories. From skirtings and profiles to the perfect underlay for Elementa, we have everything you need, made to the same exacting standards as your Elementa floor.



For more info, please check www.xtrafloor.com



The perfect finish

#05

ACCESSORIES TO EASE YOUR MIND



1. Stair profiles



2. End profile



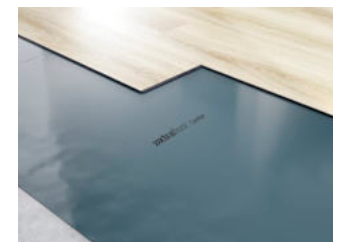
3. Expansion profile



4. Radiator cap



5. Paintable skirting



6. Underlay

#06

Looks

C L O S E R T O N A T U R E

A range of 12 wooden plank visuals, varying from light and subtle to dark and rustic for a broad appeal, capturing the nuance and variety of nature in its patterns and colours. Fitted with a modest bevel for an elegant plank effect, these floors are perfect for every type of home.



Willow Oak 04953

HINCKLEY OAK 03225

HINCKLEY OAK 03115

HARVARD OAK 03924

MILLOW OAK 04953

CORK OAK 04962

CORK OAK 04292

MILLOW OAK 04273

CORK AOK 04282

TALAMANCA OAK 01840

HINCLEY OAK 03845

TALAMANCA OAK 01850

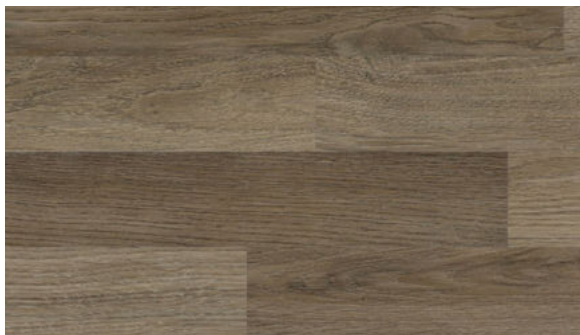
TALAMANCA OAK 01870



Cork Oak



04282



04292



04962



Click Uniclic®
Available in:
15 x 124,5 cm



4 sided modest bevel



Thickness
3,5 mm



Wear layer
0,3 mm

#06

Harvard Oak



03924



Click Un clic®
Available in:
15 x 124,5 cm



4 sided modest bevel



Thickness
3,5 mm



Wear layer
0,3 mm





American Oak 04870

Millow Oak



04273



04953

**Click Uniclic®**Available in:
15 x 124,5 cm**4 sided modest bevel****Thickness**
3,5 mm**Wear layer**
0,3 mm

#06

Talamanca Oak



01840



01850



01870



Click Uniclic®
Available in:
15 x 124,5 cm



4 sided modest bevel



Thickness
3,5 mm

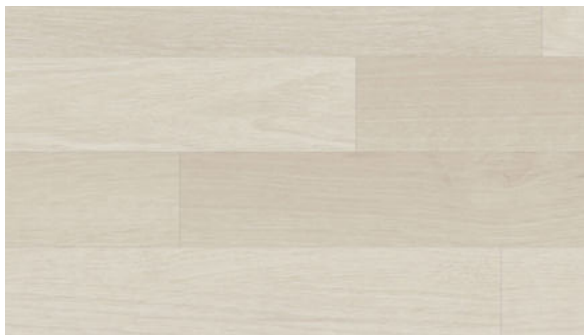


Wear layer
0,3 mm

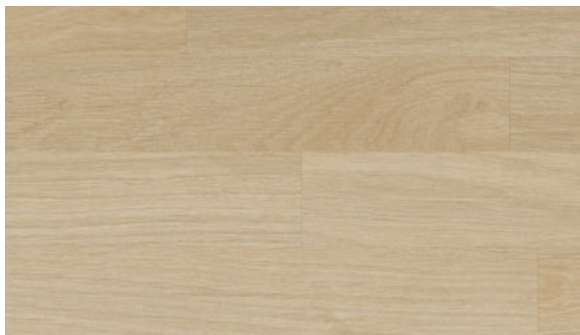




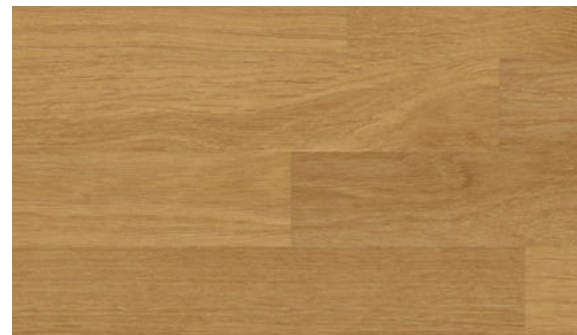
Hinckley Oak



03115



03225



03845



Click Uniclic®
Available in:
15 x 124,5 cm



4 sided modest bevel



Thickness
3,5 mm



Wear layer
0,3 mm

#06

Floors better for today

IN EVERY WAY

IVC Group is a global player in the design and manufacture of flooring solutions including Luxury Vinyl Tiles (LVT), Sheet Vinyl & Carpet Tiles for use in public and private environments. Accountable for our actions, we design and make floors responsibly in Belgium, developing a circular approach to the future of flooring.

IVC Group is part of Mohawk Industries Inc., the world's largest flooring company. With 1,500 employees and 7 production sites in Europe and Russia, IVC Group produces over 130,000,000 m² of flooring every year.

Did you know...

that IVC Group employs over 30 different nationalities worldwide? That's the many cultures and inspirations which go into our eclectic floor designs, explaining their global appeal.



At IVC Group, we believe that innovation is the best way to create better floors for today's homes. Our Rigid LVT technology ensures that you benefit from a floor that's not only beautiful to look at, but also simple to install, long-lasting and easy to maintain.

We've submitted Elementa to a series of stringent external tests for the international standard ISO 10582. By exposing Elementa to tests on quality, wear and strength; this new standard is a sign that we're committed to delivering you floors that are better for today, in every way.

Technical specifications

#07

OF ELEMENTA

PRODUCT INFORMATION

Level of use EN ISO 10874 23 - 31

Total thickness EN ISO 24346 3,5 mm

Wear layer EN ISO 24340 0,3 mm

Wear layer PUR treatment Superguard®

Total weight g/m² EN ISO 23997 7110

SIZE & PACKING

Planks EN ISO 24342 15 x 124,46 cm

Box planks 2,99 m²/box
16 pcs/box

TEST RESULTS

Inflammability EN 13501-1 Bfl-S1

Abrasion group EN 660-2 Group T

Scratch resistance EN 16094 ≤ MSR-A2 | ≤ MSR-B2

Slip resistance EN 13893 DS

Slip restraint DIN 51130 ≥ R9

Residual indentation EN 24343-1 ≤ 0,10 mm

Furniture leg resistance EN ISO 16581 No visible damage

Impact resistance EN 13329 Annex F ≥ 1800 mm

Curling EN ISO 23999 ≤ 1 | mm

Dimensional stability EN 23999 Norm: ≤ 0,15 | %
Value: ≤ 0,05%

Acoustic insulation + Xtrafloor Comfort EN ISO 717-2 Δ Lw = 8 dB

Castor chair resistance EN ISO 4918 No damage to wearlayer, no delamination


Stain resistance EN 438-2 Very good

Light fastness EN ISO 105-B02 ≥ 6

Underfloor heating EN 12524 Suitable, max 27°C

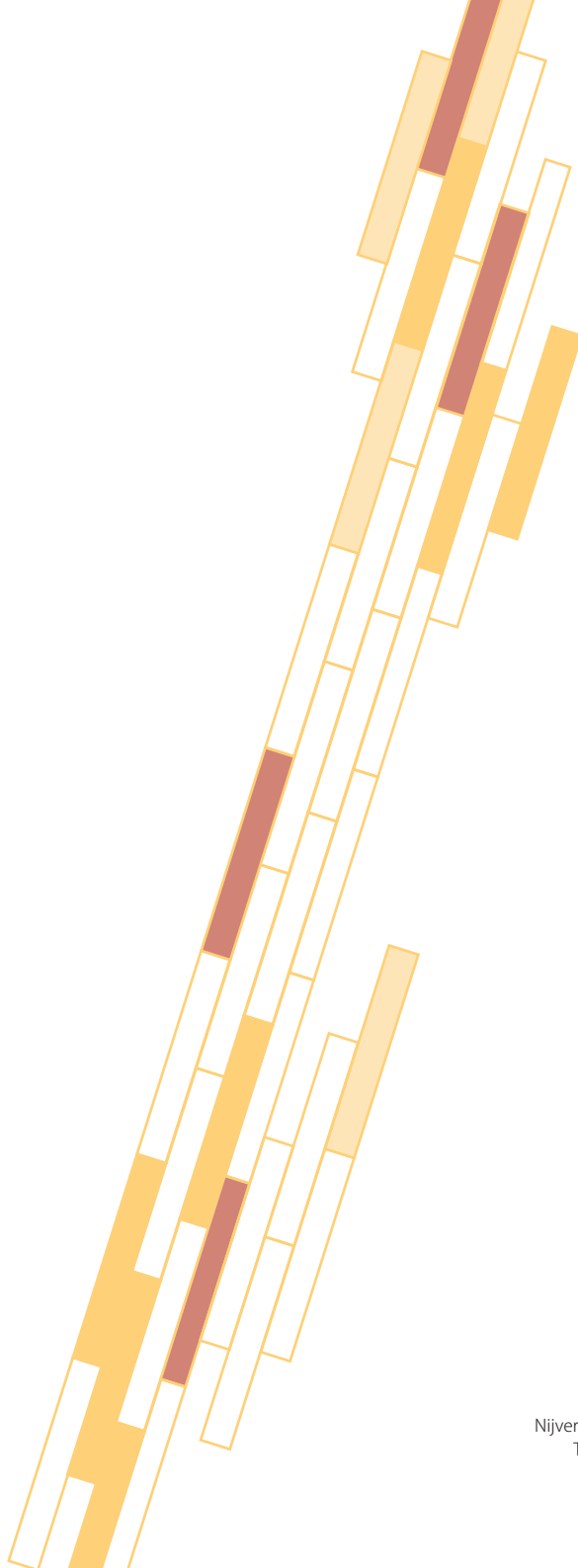
Maximum allowed ambient and surface temperature 45°C

Warranty (year) 12 Residential - 5 Commercial

	22	EN14041:2004/AC:2006	Reaction to fire	PCP	Formaldehyde emission	Slip resistance				
			Bfl-s1	< 5PPM	E1	DS				
			IVC bv - Nijverheidslaan 29 B-8580 Avelgem, Belgium 0032/56/67/5211				Water-tightness	Electrical resistance	Thermal resistance	Antistatic performance
							NA	NPD	NPD	NPD
DOP - LVT		ivcgroup.com		LVT Rigid / 3,50 mm / 0,3 mm for indoor use according to EN ISO 10582						

The warranty covers manufacturing defects and premature wear in the event of normal use.





DESIGN | FLOORS
by **ivc**group

Nijverheidslaan 29 | 8580 Avelgem | Belgium
T +32 (0)56 653 211 | info@ivcgroup.com
www.ivcgroup.com
BTW BE 0866.682.231